



**marantz®**

Integrated Amplifier  
**PM6006**

**Quick Start Guide**

Guide de démarrage rapide / Guía de inicio rápido

**Read Me First....**

Lisez-moi en premier... / Lea esto primero....

ENGLISH

FRANÇAIS

ESPAÑOL

# Welcome

Thank you for choosing a Marantz amplifier.  
This guide provides step-by-step instructions  
for setting up your amplifier.

**Please do not return this unit to the store –  
call for assistance.**

**If you need help... :**

If you need additional help in solving problems,  
contact Marantz customer service in your area.

## 1-855-ONE-Marantz

1-855-663-6272

Call for Assistance:

Monday – Friday 10:00AM to 10:00PM E.S.T.

Saturday 12:00PM to 8:00PM E.S.T


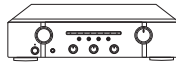




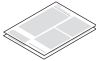

For frequently asked questions please visit

<http://marantz.custhelp.com/app/answers/list>


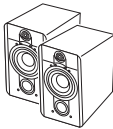

For US and Canada only

# Before You Begin

## What's In the Box

Quick Start Guide		Amplifier	
Owner's Manual		Power cord	
Safety Instructions		Remote control unit	
Warranty (for USA/for CANADA)		R03/AAA batteries	

## Required for Basic connections

		
CD player	Speaker systems	Speaker cables



These drawings are for illustrative purposes only and may not  
represent the actual product(s).

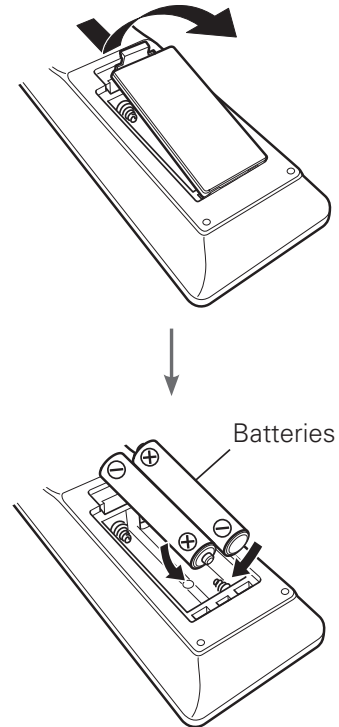
# Setup

There are six steps to the setup process.

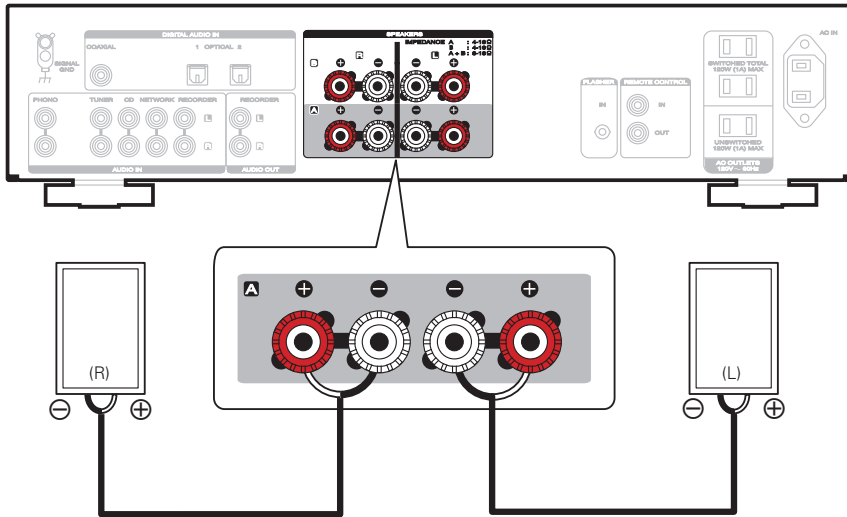
- 1** Install batteries in the remote control unit
- 2** Connect the speakers to the amplifier
- 3** Connect the CD player to the amplifier
- 4** Plug the power cord into a power outlet
- 5** Turn on the power of the amplifier and then set the speakers for audio output to **SPEAKERS A**
- 6** Begin playback

**1**

## Install batteries in the remote control unit



## 2 Connect the speakers to the amplifier

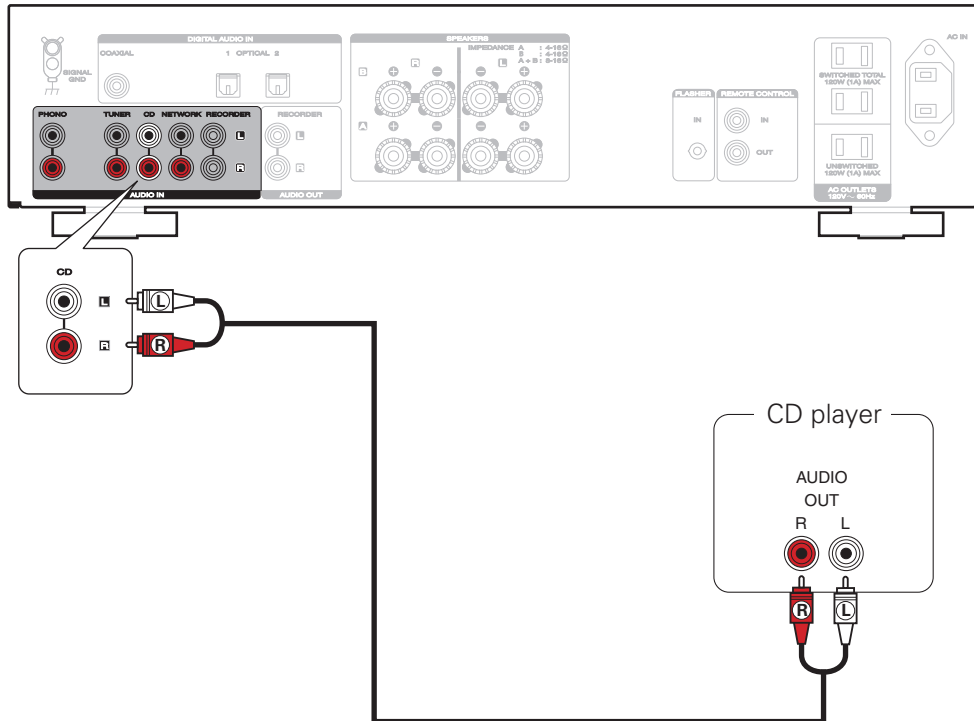


### Connecting the speaker cables

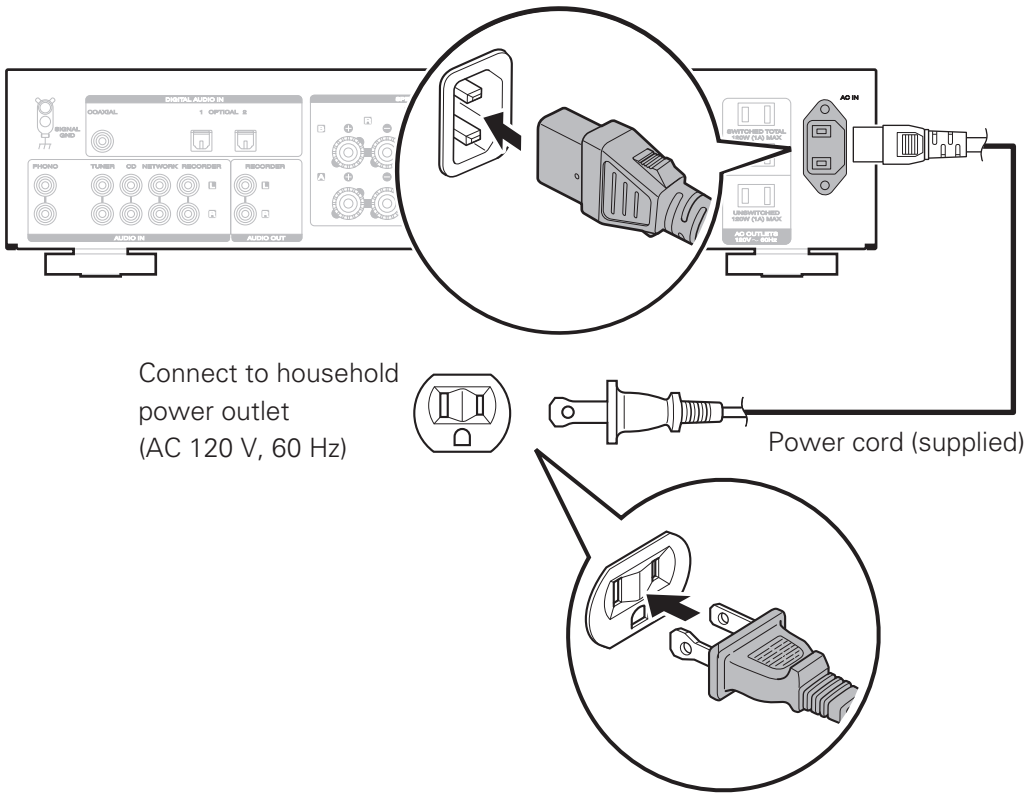
- 1 Peel off about 3/8 inch (10 mm) of sheathing from the tip of the speaker cable, then either twist the core wire tightly or apply solder to it.
- 2 Turn the speaker terminal counterclockwise to loosen it.
- 3 Insert the speaker cable's core wire to all the way into the speaker terminal.
- 4 Turn the speaker terminal clockwise to tighten it.



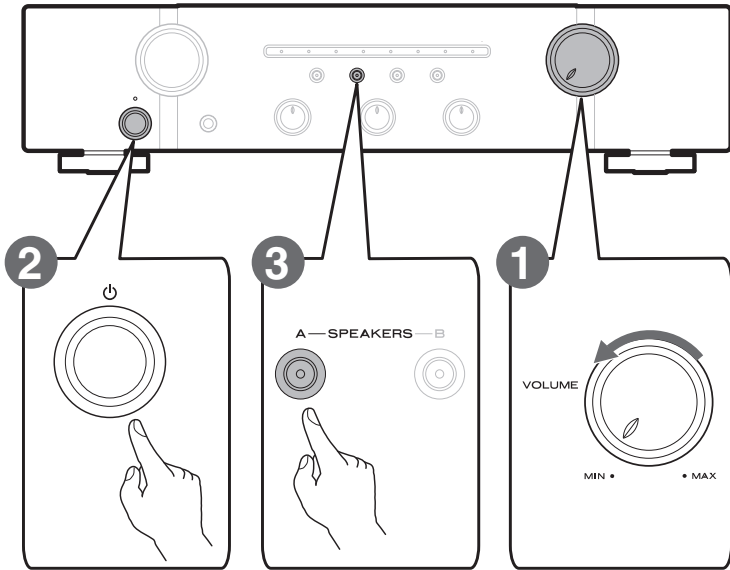
### 3 Connect the CD player to the amplifier



# 4 Plug the power cord into a power outlet



# 5 Turn on the power of the amplifier and then set the speakers for audio output to SPEAKERS A



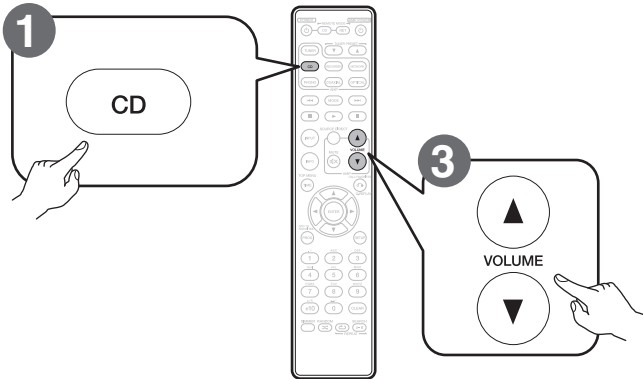
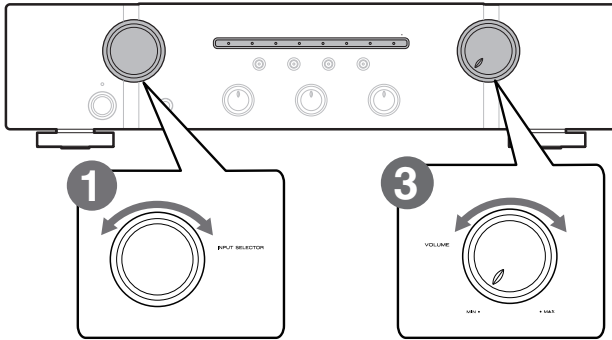
**1** Reduce the volume to the minimum level.

**2** Press the power operation button.

**3** Press **SPEAKERS A**.

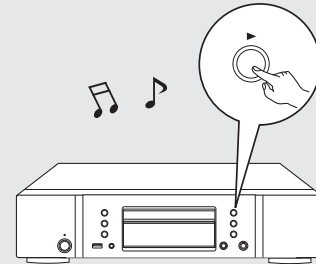
The **SPEAKERS A** indicator lights and the speakers for audio output are set to **SPEAKERS A**.

## 6 Begin playback



**1** Set the input source to “CD”.

**2** Play the CD player.



**3** Adjust the volume.



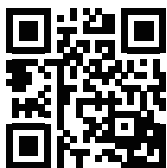
# Owner's Manual

Please reference to the Owner's Manual for more details about the setup and operation of the amplifier and its features.

## ❑ Online Version

Enter the following URL into your web browser:

[manuals.marantz.com/PM6006/NA/EN/](http://manuals.marantz.com/PM6006/NA/EN/)



Online Manual

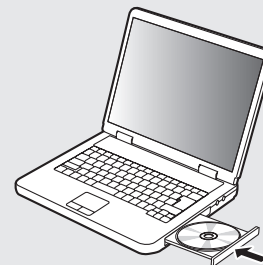


## ❑ Printable Version

Access the print version of the owner's manual from the included CD-ROM or select the "PDF Download" link from the Online Version.

1

**Insert the disc into your PC.**



2

**Follow the screen or double click on the PDF file.**

**[www.marantz.com](http://www.marantz.com)**

You can find your nearest authorized distributor or dealer on our website.

**marantz**<sup>®</sup> is a registered trademark.