



**marantz®**

## **Bluetooth CD Receiver M-CR412**

Quick Start Guide

**Start Here**

**Starten Sie hier**

**Commencez ici**

**Iniziare qui**

**Iniciar aquí**

**Begin hier**

**Starta här**

**Начните здесь**

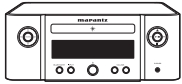
**Zaczniij tutaj**



# Before you begin

## What's In The Box

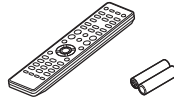
---



M-CR412



Power cord



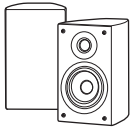
Remote and batteries



DAB/FM indoor antenna

## Required For Setup

---



Speakers



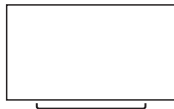
Speaker cables

## Optional

---



Mobile device  
with Bluetooth  
capabilities



TV  
with optical output



Optical cable

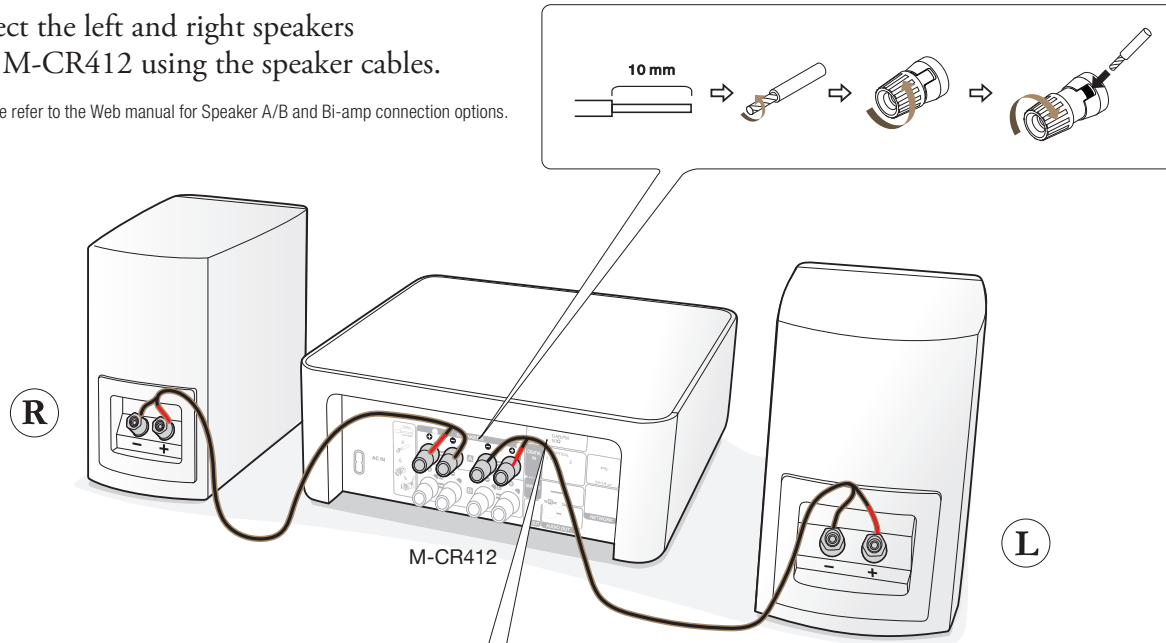
- For more information, visit [www.marantz.com](http://www.marantz.com)
- Refer to the online manual for other functions information and operation procedure details.  
[manuals.marantz.com/MCR412/EU/EN/](http://manuals.marantz.com/MCR412/EU/EN/)



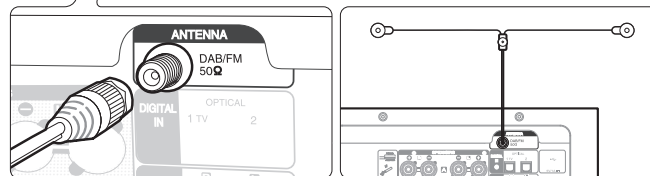
# 1. Connection

- 1 Connect the left and right speakers to the M-CR412 using the speaker cables.

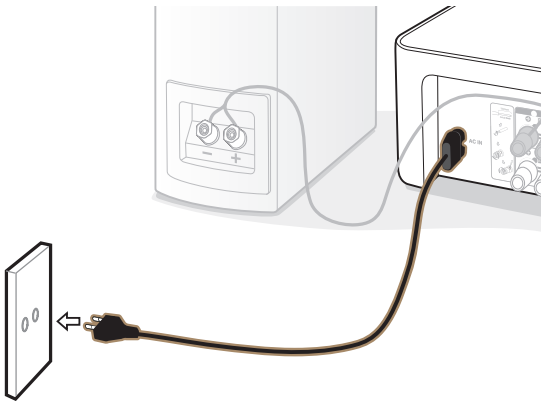
Note: Please refer to the Web manual for Speaker A/B and Bi-amp connection options.



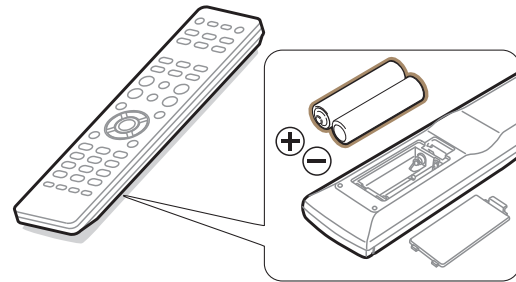
- 2 Connect the DAB/FM antenna and attach antenna to surface.



- 3** Connect the power cord from the M-CR412 to a power outlet.



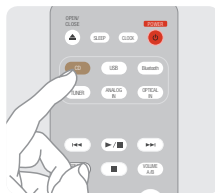
- 4** Insert the batteries into the remote.



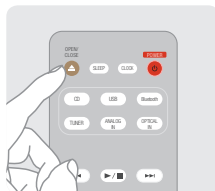
## 2. Enjoying your music!

### Listening to CD

- 1 Using the remote, press CD to switch the input source to "CD".



- 2 Press ▲ to open the disc tray and insert a disc.



- 3 Press ▲ to close the disc tray.  
The M-CR412 will play the CD automatically.

Note: To disable Auto-play, press the SETUP on the remote, and set "CD Auto-Play" to "Off".

### Listening to DAB/FM broadcasts

- 1 Press TUNER to select the type of reception band.

- DAB: When listening to a DAB broadcast.
- FM: When listening to an FM broadcast.



- 2 Press TUNE + or TUNE – to select the station you want listen to.



### How to auto-preset your favorite FM stations

Up to 40 FM stations can be preset in M-CR412

- 1 Press SEARCH during FM reception.  
"SEARCH" menu appears on the display.
- 2 Use ▲▼ and ENTER to select "Auto Preset", then press ENTER.  
The unit will start to tune in to radio stations automatically and preset them.
- 3 Use CHANNEL – or CHANNEL + to select the preset number.

## Listening to music using Bluetooth


- 1 Press the BLUETOOTH button on your M-CR412 to switch the input source to “Bluetooth”.

Note: When using for the first time, the M-CR412 will go into the pairing mode automatically and “Bluetooth Pairing” will appear on the display of the M-CR412.

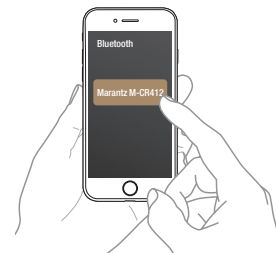


- 2 Activate Bluetooth on your mobile device.

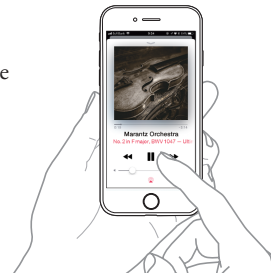


 To reconnect a previously paired Bluetooth device, start at step 2.

- 3 Select “Marantz M-CR412” from the Bluetooth device list on your mobile device.



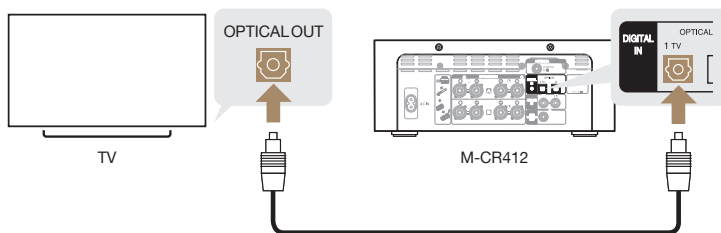
- 4 Play your music using any app on your mobile device.



To pair with other Bluetooth devices, press and hold the “Bluetooth” button until “Bluetooth Pairing” is displayed on the M-CR412.

## Listening to sound from your TV

- 1 Connect the optical cable from your TV to the “OPTICAL IN 1” connector of the M-CR412.



- 2 Turn on your TV.  
The M-CR412 will automatically turn on and switch to the “OPTICAL IN 1” input.

Note : To disable Auto-play, press the SETUP on the remote, and set “TV Auto-Play” to “Off”.

### Trouble-shooting common issues connecting to TV

No sound:

- Check all connections.
- Make sure the bare metal wire ends of the speaker wires are in contact with the metal part of the speaker terminals.
- Check the digital audio output setting on your TV is equal to M-CR412.
- Only 2-channel linear PCM can be input as the digital audio signal to the OPTICAL IN connector of the M-CR412.

**[www.marantz.com](http://www.marantz.com)**

You can find your nearest authorized distributor or dealer on our website.

**marantz**<sup>®</sup> is a registered trademark.