

marantz®

Integrated Amplifier
PM8005

Getting Started

Erste Schritte

Mise en route

Guida introduttiva

Antes de empezar

Aan de slag

Att komma igång

Начало работы

Skrócona instrukcja obsługi

ENGLISH

DEUTSCH

FRANÇAIS

ITALIANO

ESPAÑOL

NEDERLANDS

SVENSKA

РУССКИЙ

POLSKI

Welcome

Thank you for choosing a Marantz amplifier. This guide provides step-by-step instructions for setting up your amplifier.

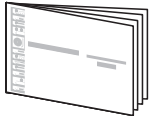
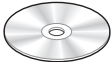

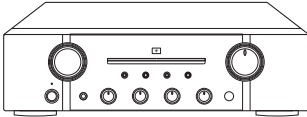
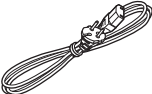
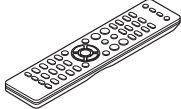
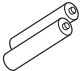
If you have setup problems:

If you need additional help in solving problems, contact Marantz customer service in your area.

For details, see the Marantz homepage. www.marantz.com

Before You Begin

What's In the Box

 Getting Started	 Owner's Manual	 Safety Instructions
 Amplifier		 Power cord
 Remote control unit	 R03/AAA batteries	

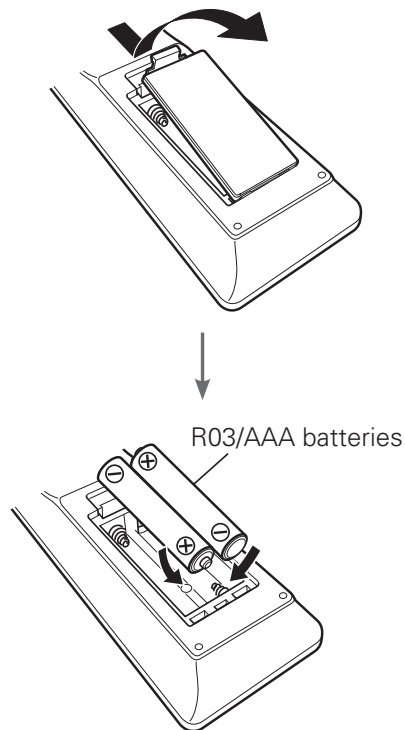
Setup

There are six steps to the setup process.

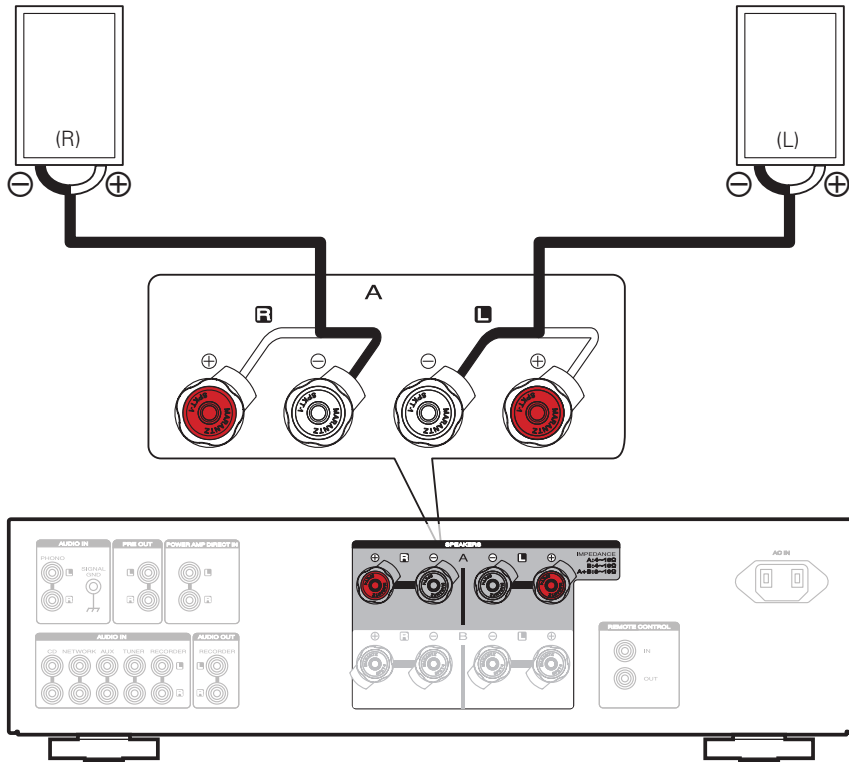
- 1** Install batteries in the remote control unit
- 2** Connect the speakers to the amplifier
- 3** Connect the CD player to the amplifier
- 4** Plug the power cord into a power outlet
- 5** Turn the amplifier's power on
- 6** Begin playback

1

Install batteries in the remote control unit

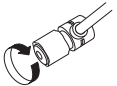
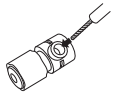
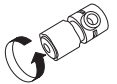


2 Connect the speakers to the amplifier

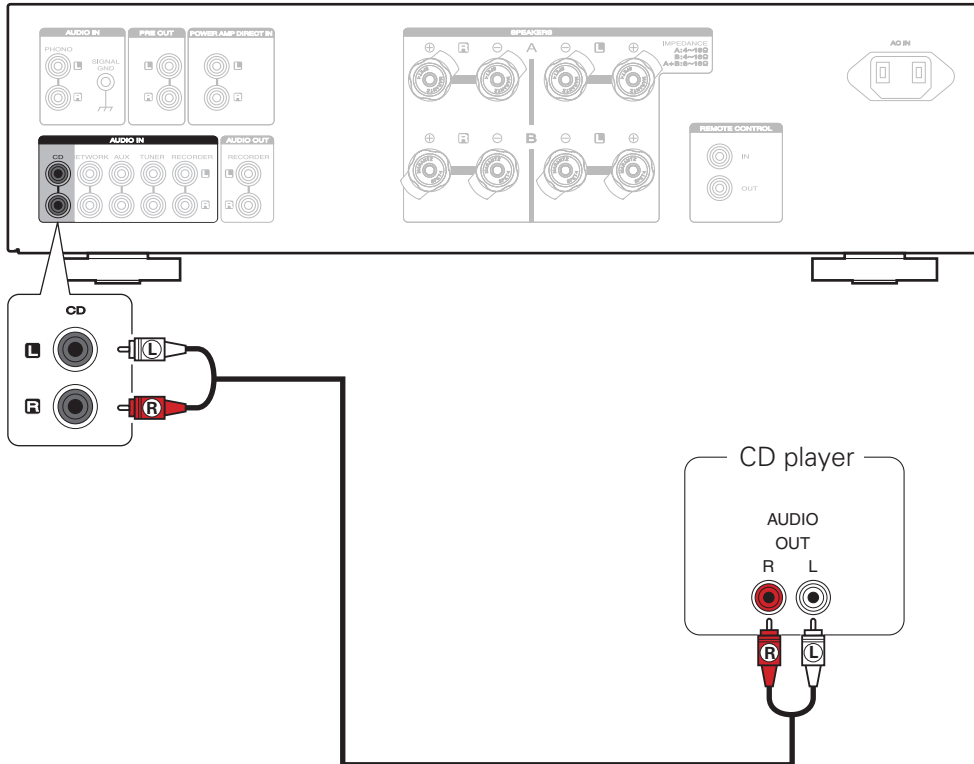


Connecting the speaker cables

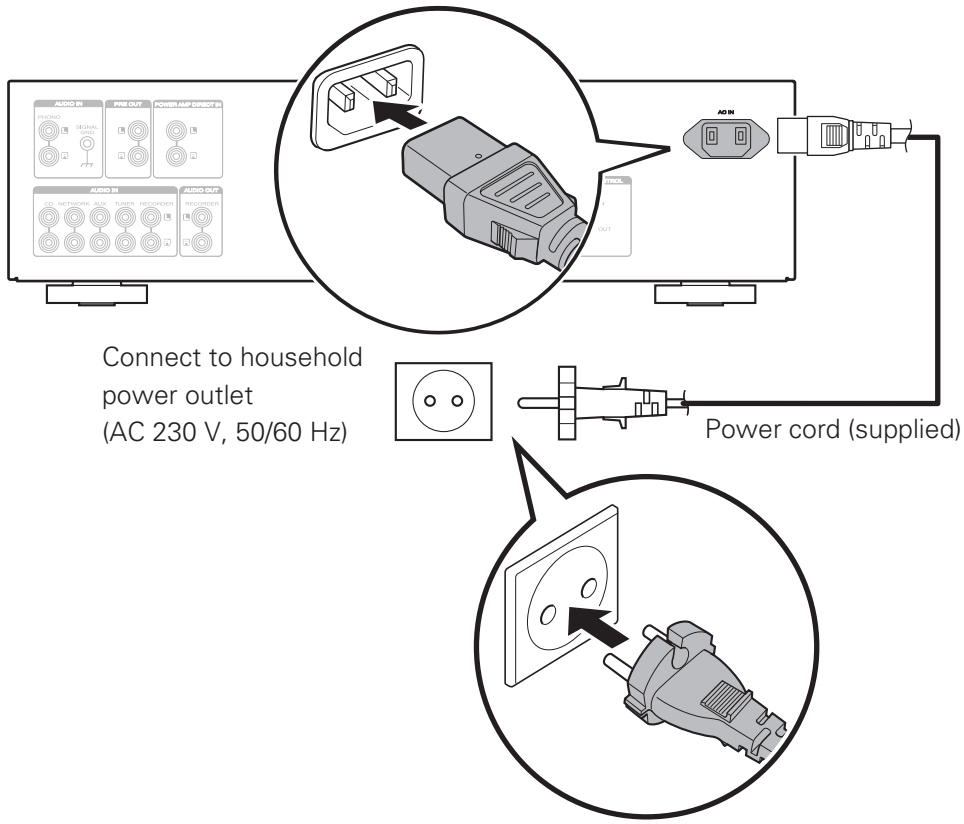
- 1 Peel off about 10 mm of sheathing from the tip of the speaker cable, then either twist the core wire together or apply solder to it.
- 2 Turn the speaker terminal counterclockwise to loosen it.
- 3 Insert the speaker cable's core wire to all the way into the speaker terminal.
- 4 Turn the speaker terminal clockwise to tighten it.



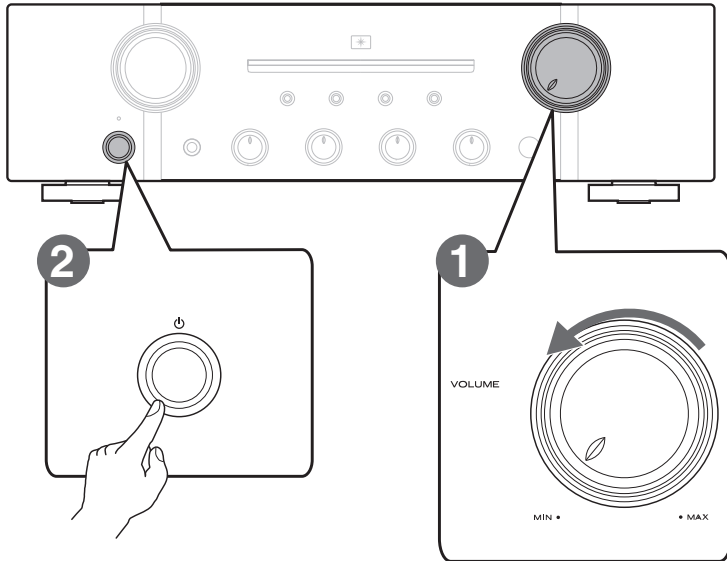
3 Connect the CD player to the amplifier




4 Plug the power cord into a power outlet

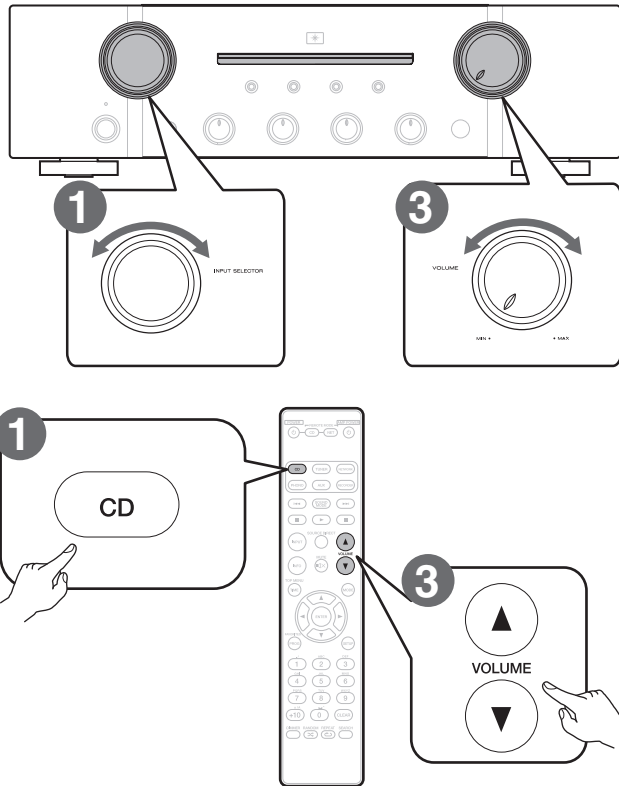


5 Turn the amplifier's power on



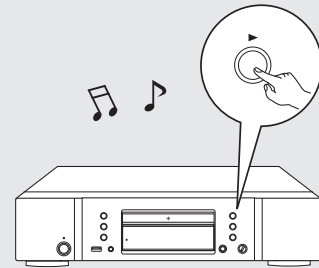
- 1 Reduce the volume to the minimum level.
- 2 Press  to turn the power on.

6 Begin playback



1 Set the input source to “CD”.

2 Play the CD player.



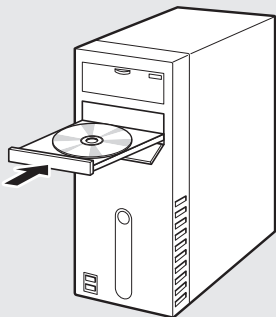
3 Adjust the volume.

Owner's Manual

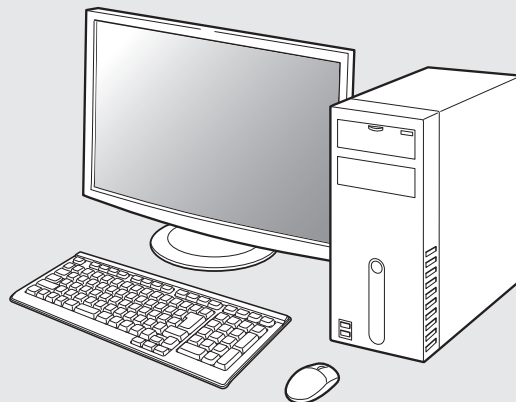
The included CD-ROM contains an Adobe PDF version of the full owner's manual for the amplifier.

Please reference this manual for more details about the setup and operation of the amplifier and its features.

1 Insert the disc into your PC.



2 Follow the screen or double click on the PDF file.



- You can also download the owner's manual from the Marantz website.

www.marantz.com



www.marantz.com

You can find your nearest authorized distributor or dealer on our website.

marantz[®] is a registered trademark.

D&M Holdings Inc.
Printed in China 5411 11094 00AM